



A.B. ELLIE

024 VEILS, CAPES, SLEEVES

contents

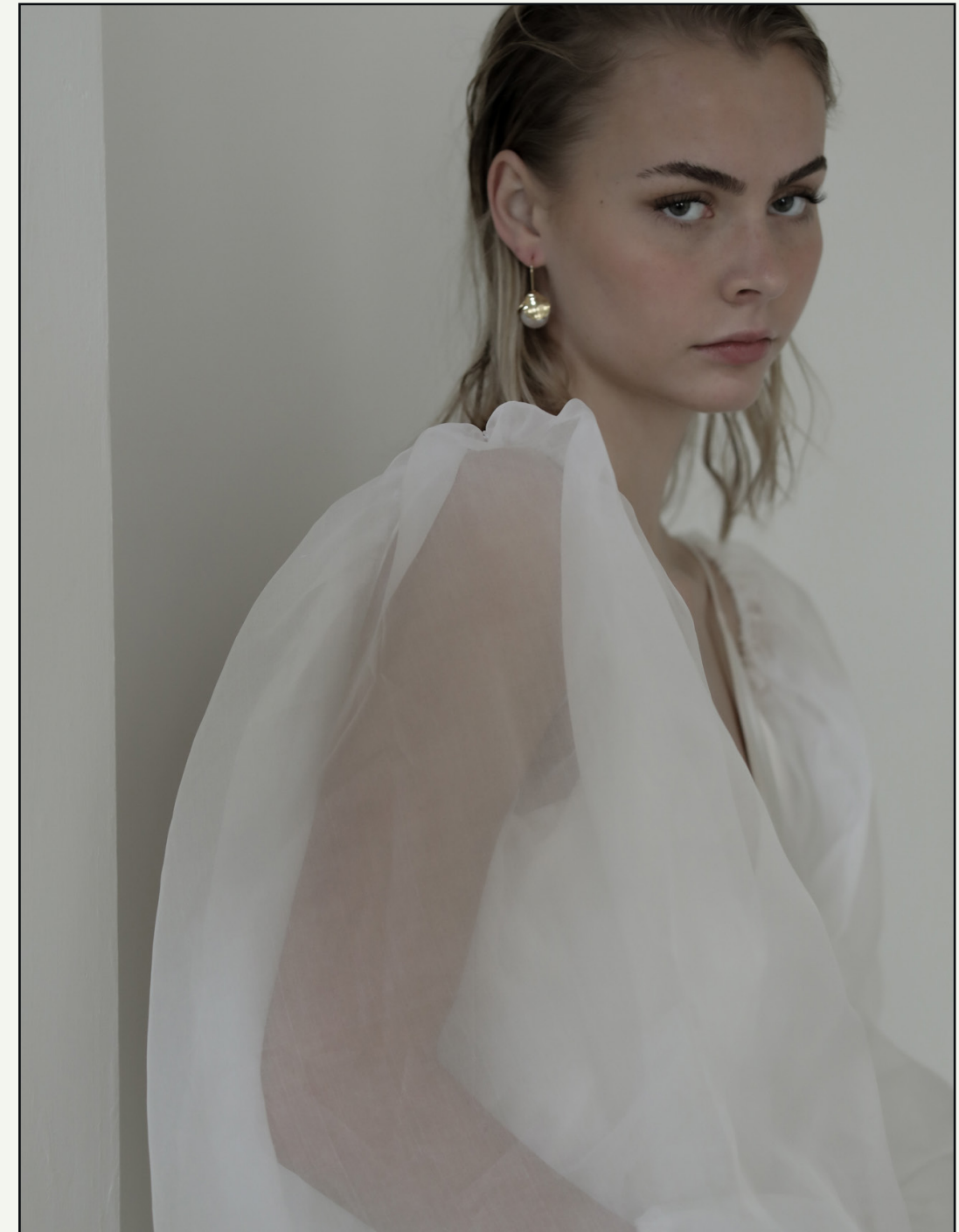
veils 6.

capes 46.

sleeves 50.

contact 60.

VEILS, CAPES AND SLEEVES: IT'S THE ACCESSORY THAT SAYS, 'H*LL YES, I'M GETTING MARRIED!'. For us, it's a revival of an old tradition - we're tossing out norms + setting new standards for bridal. From minimalist silhouettes to forward, editorial veils - the 'bride' moment comes in many forms.



VEILS



ingrid pearl veil



perla freshwater pearl veil





drew veil
lennon pearl necktie



harlow pearl veil



hayden pearl veil
harley pearl veil





hutton pearl veil



Iana bow veil
gemma veil





kinsley mod veil
kinsley drop veil





charlotte feather veil



rain crystal veil
rain necktie



gigi veil





freya edge veil
emery smocked veil





aster raffia veil



luna veil



raw edge veil



minimal edge veil





chiffon drop veil
chiffon veil
chiffon circlet veil





pleated veil

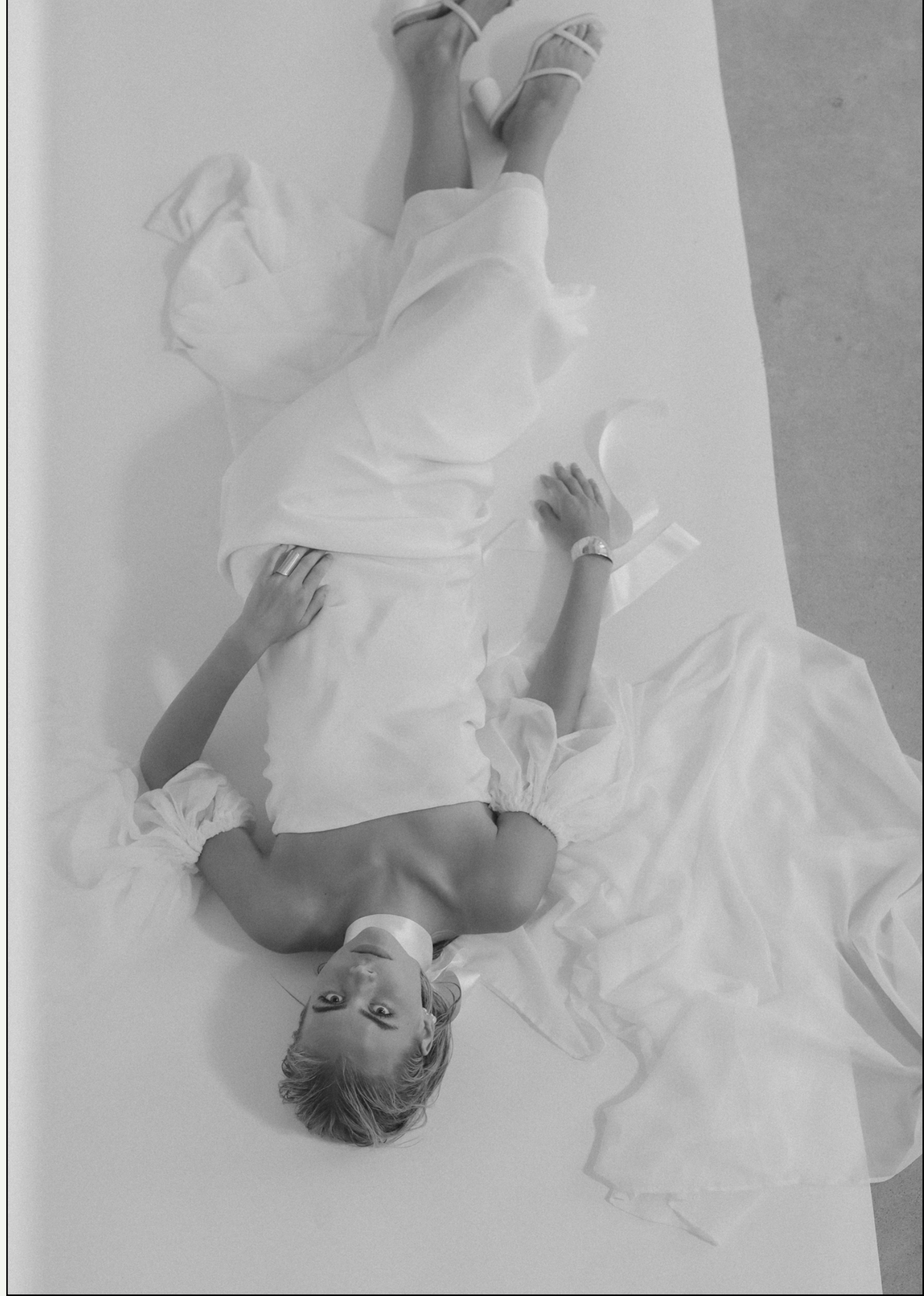


SLEEVES

ruched sleeves



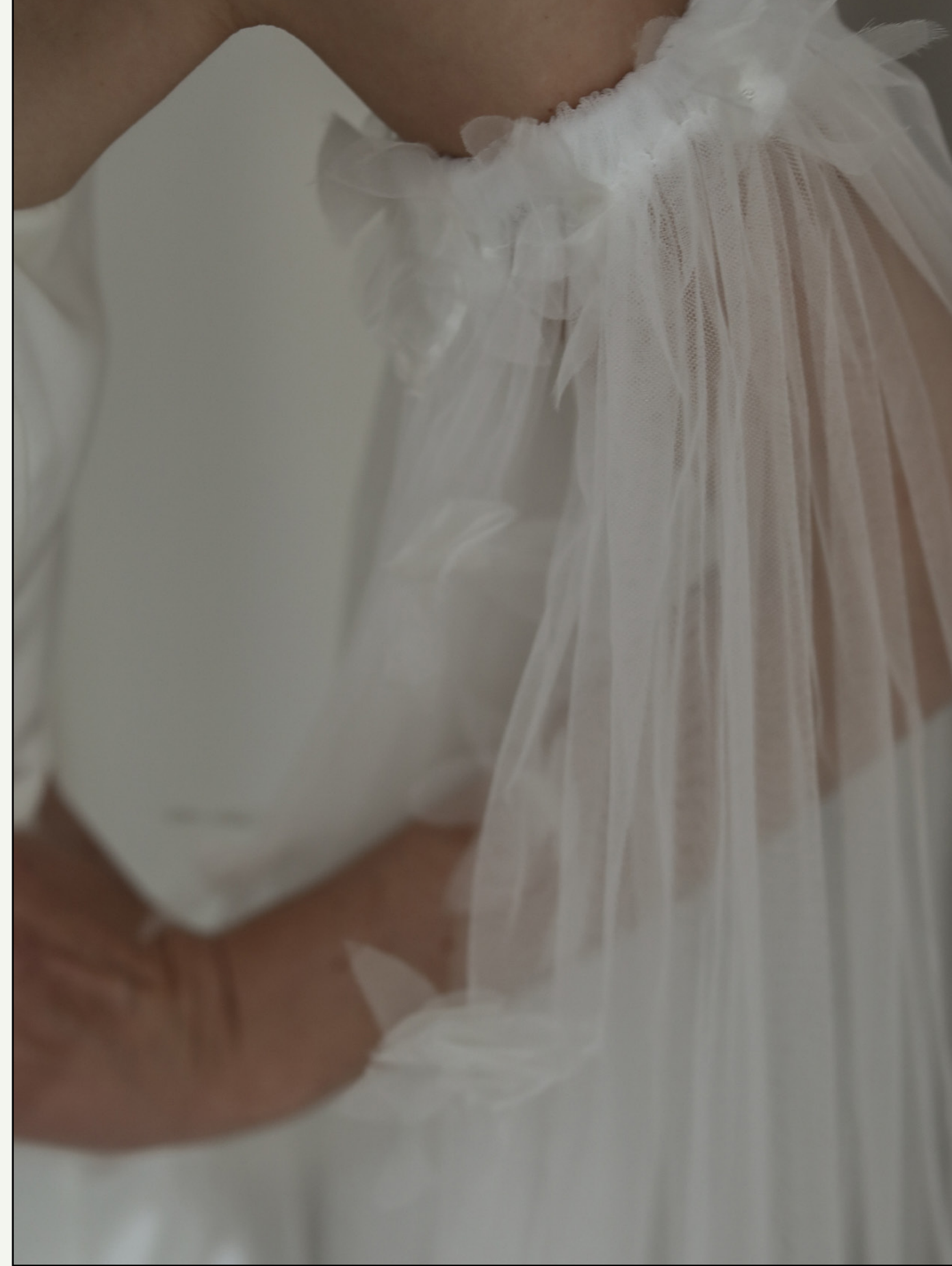
pleated column sleeves
chiffon column sleeves





hayden pearl column sleeves





luna column sleeves

CAPES

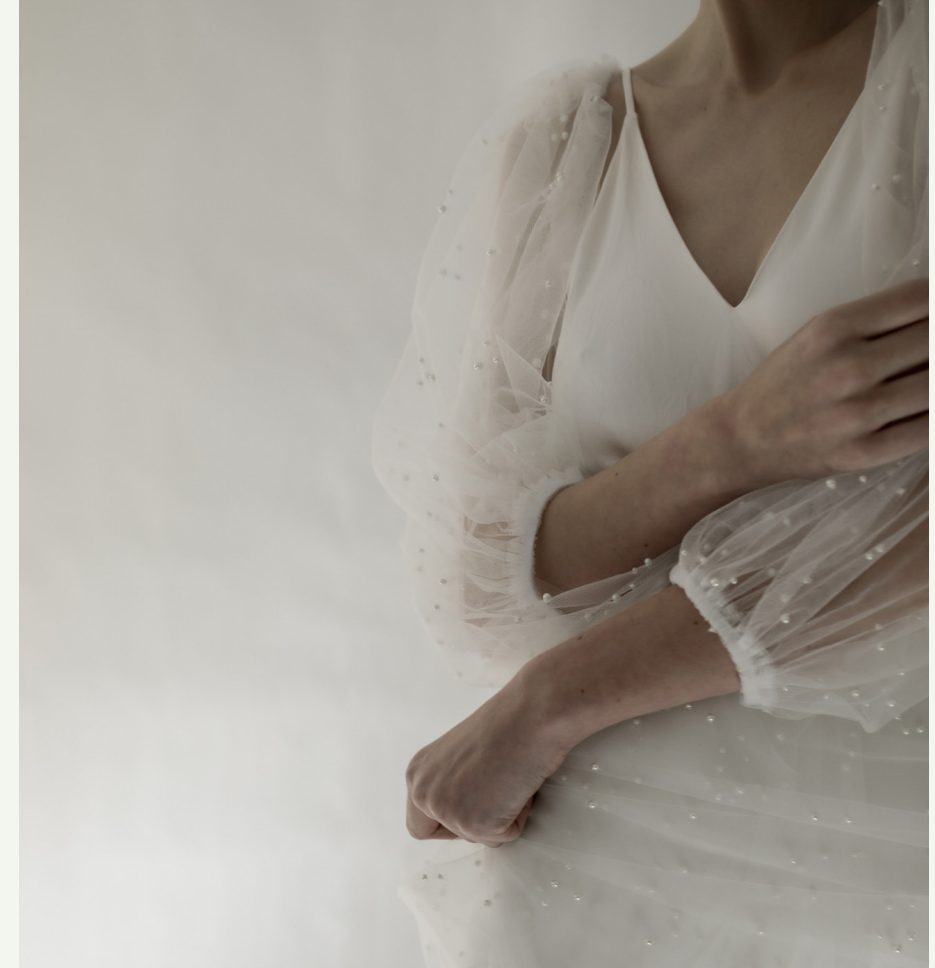


organza cape



pleated cape





harlow cape





chiffon cape



contact — be in touch

info@abellie.com

651 . 428 . 2522

abellie.com

[@a.b.ellie](#)